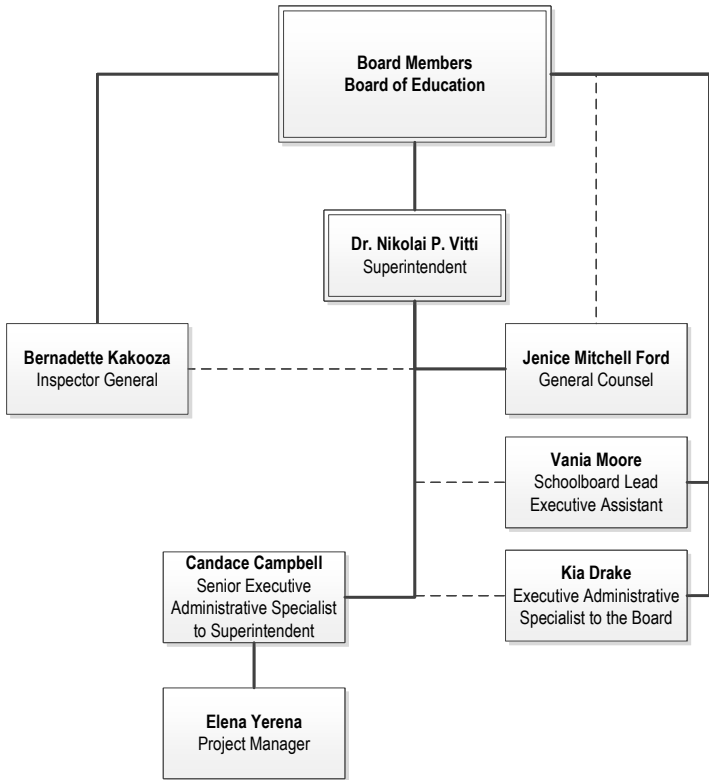




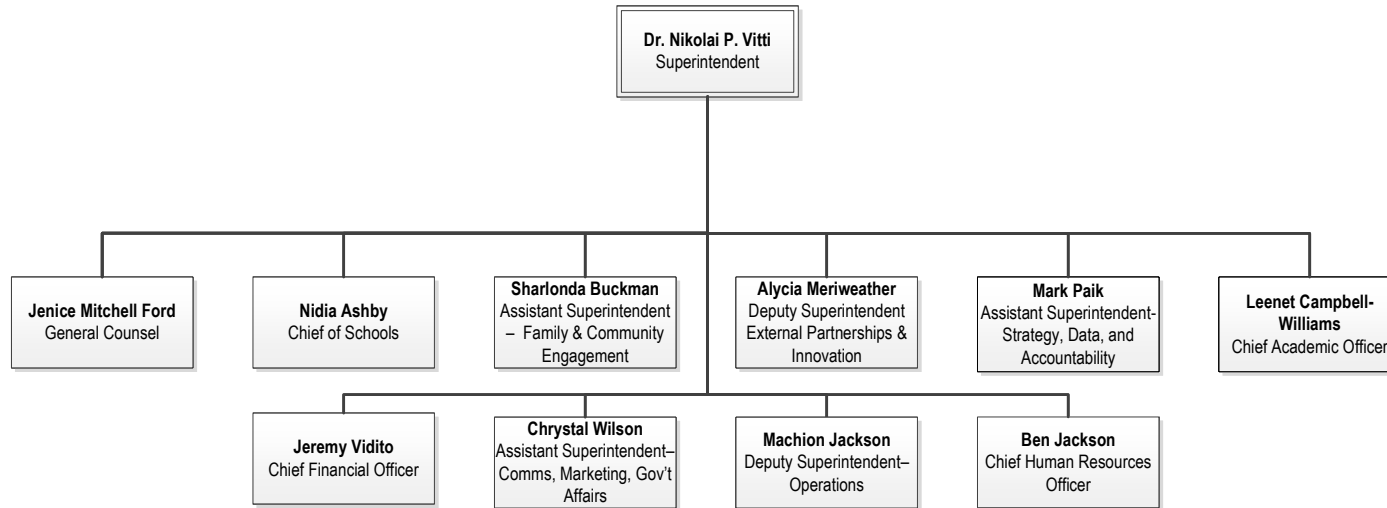
# **2025-2026**

## **Central Office Organizational Charts**

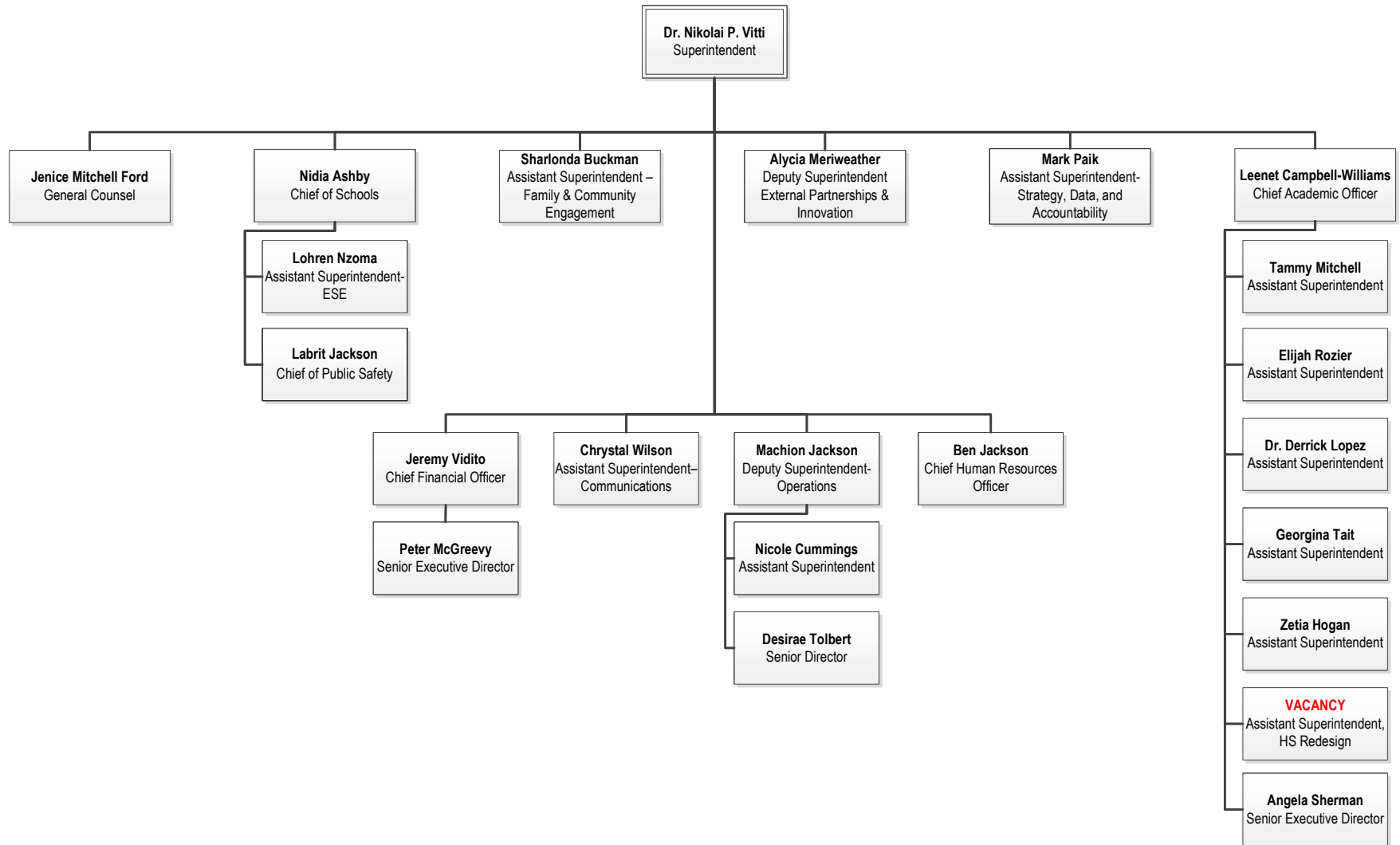
# Board of Education and Office of the Superintendent



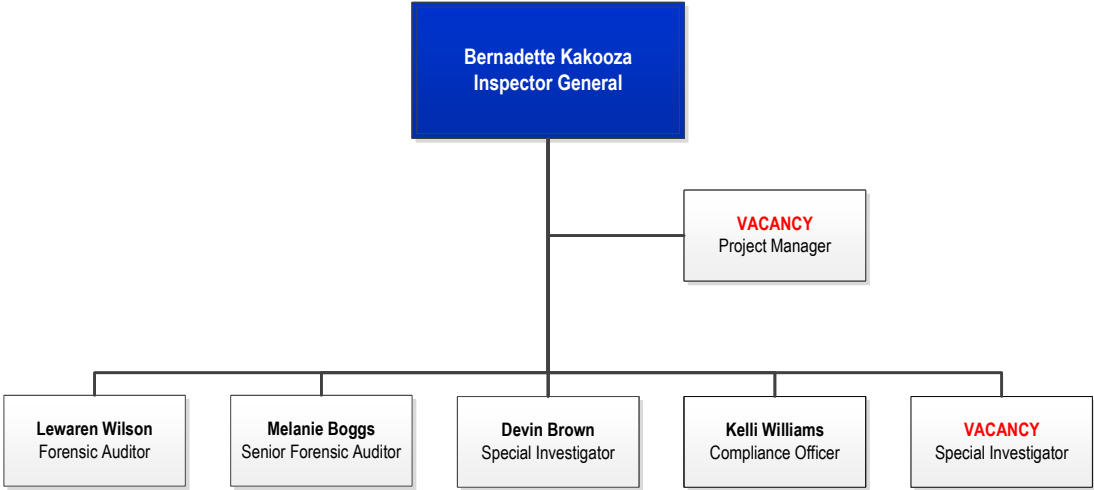
# Superintendent's Cabinet



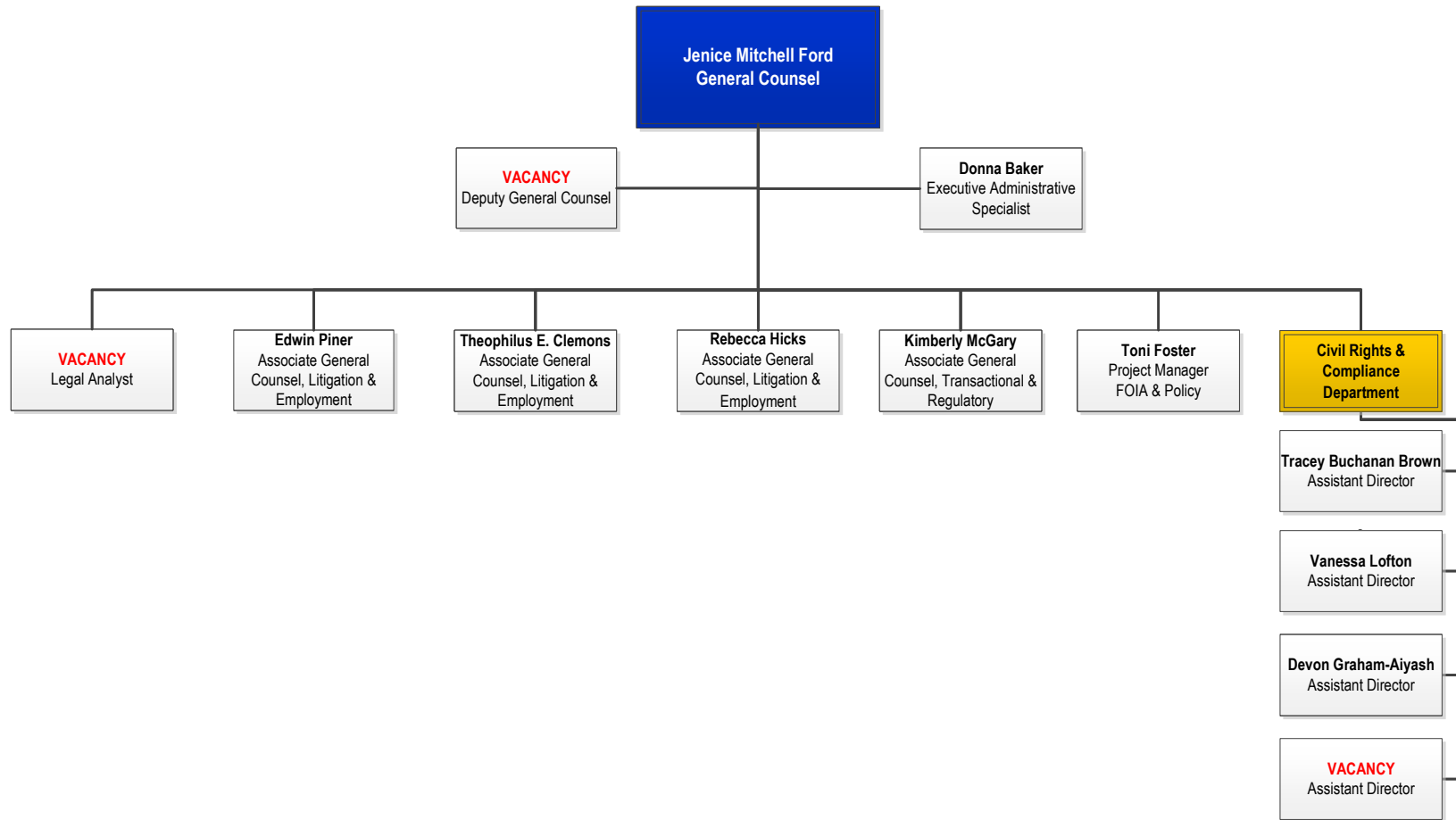
# Superintendent's Senior Staff



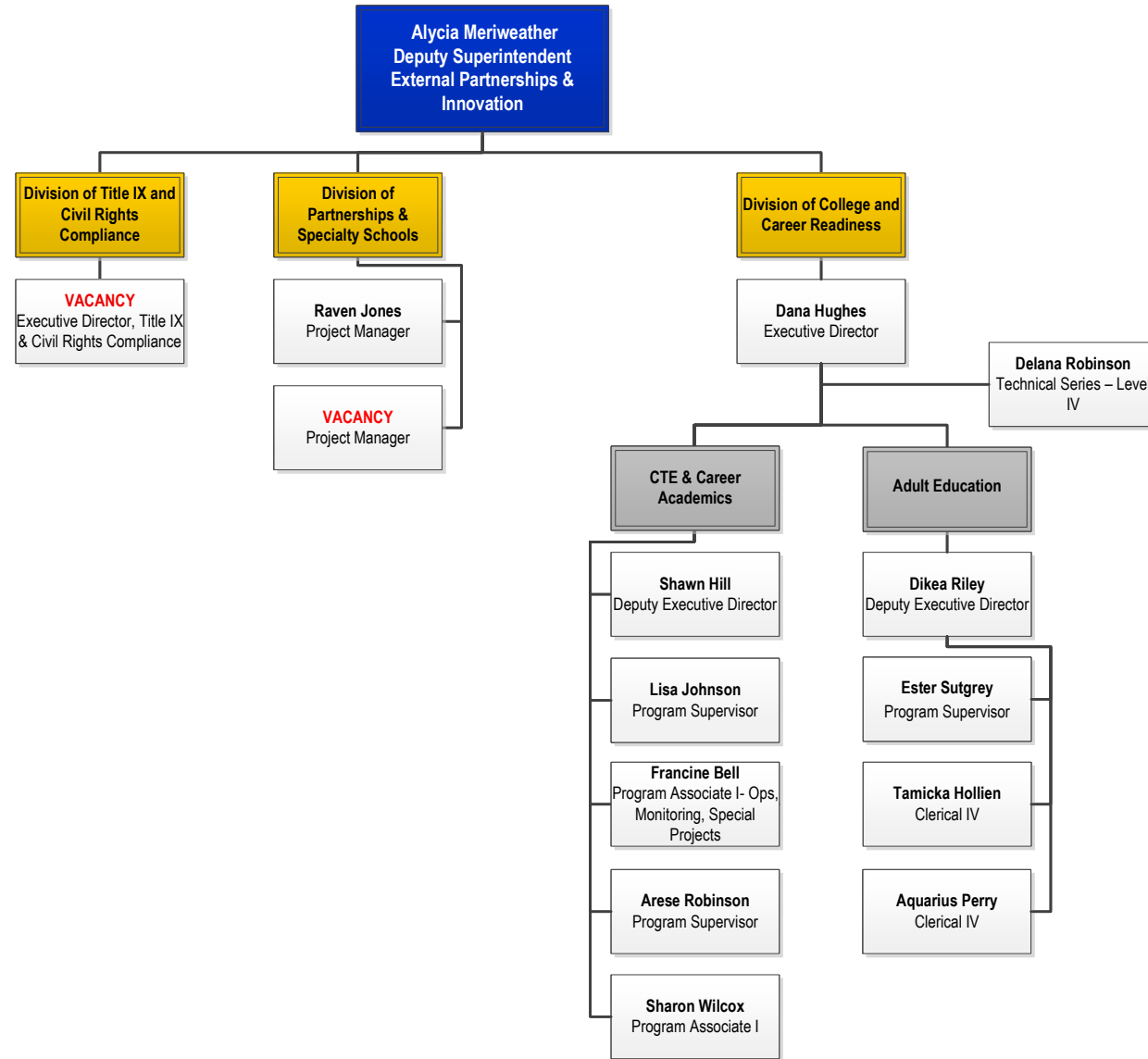
# Office of Inspector General



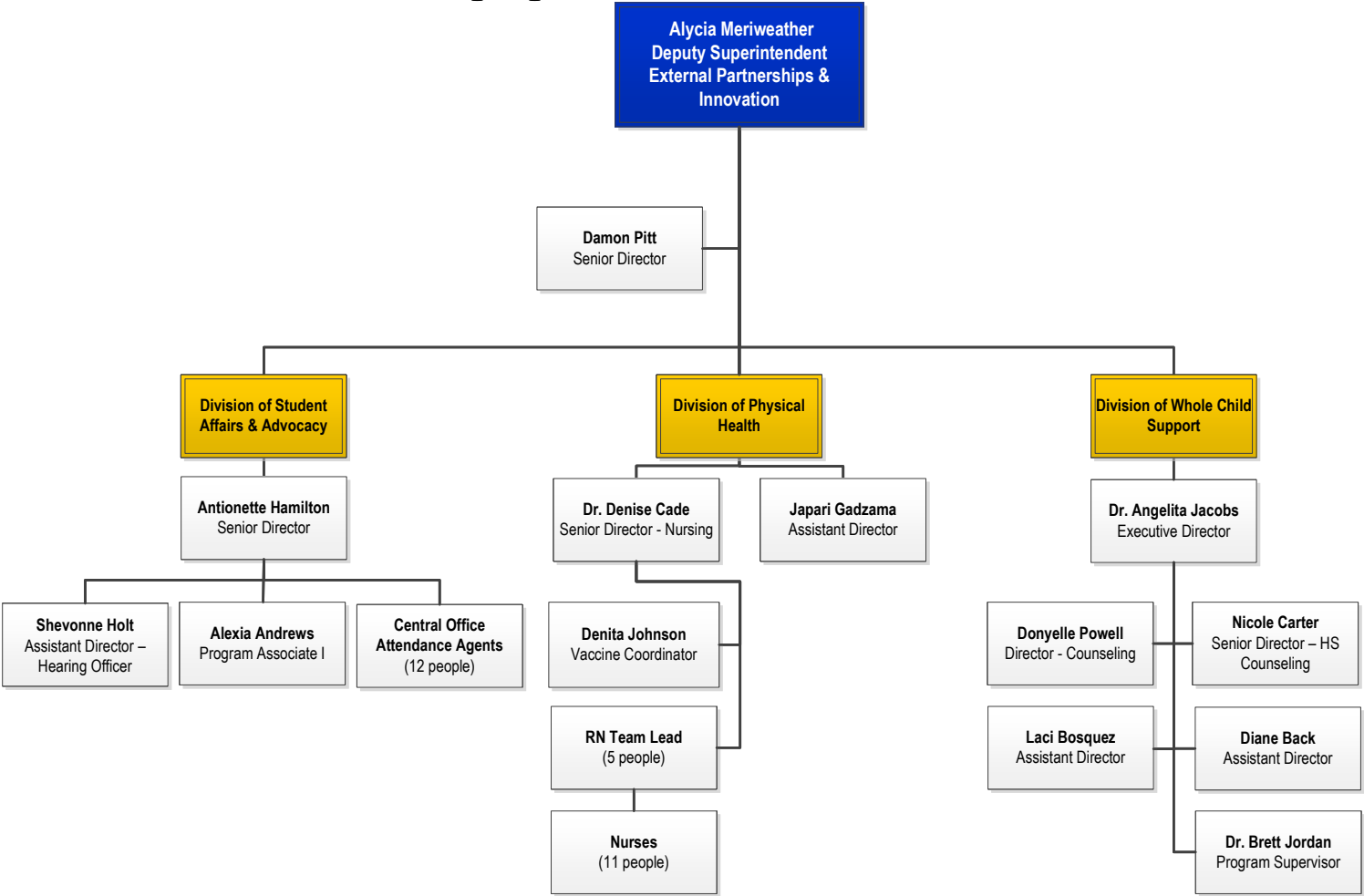
# Office of General Counsel



# Office of Partnerships, Innovation and Whole Child Support

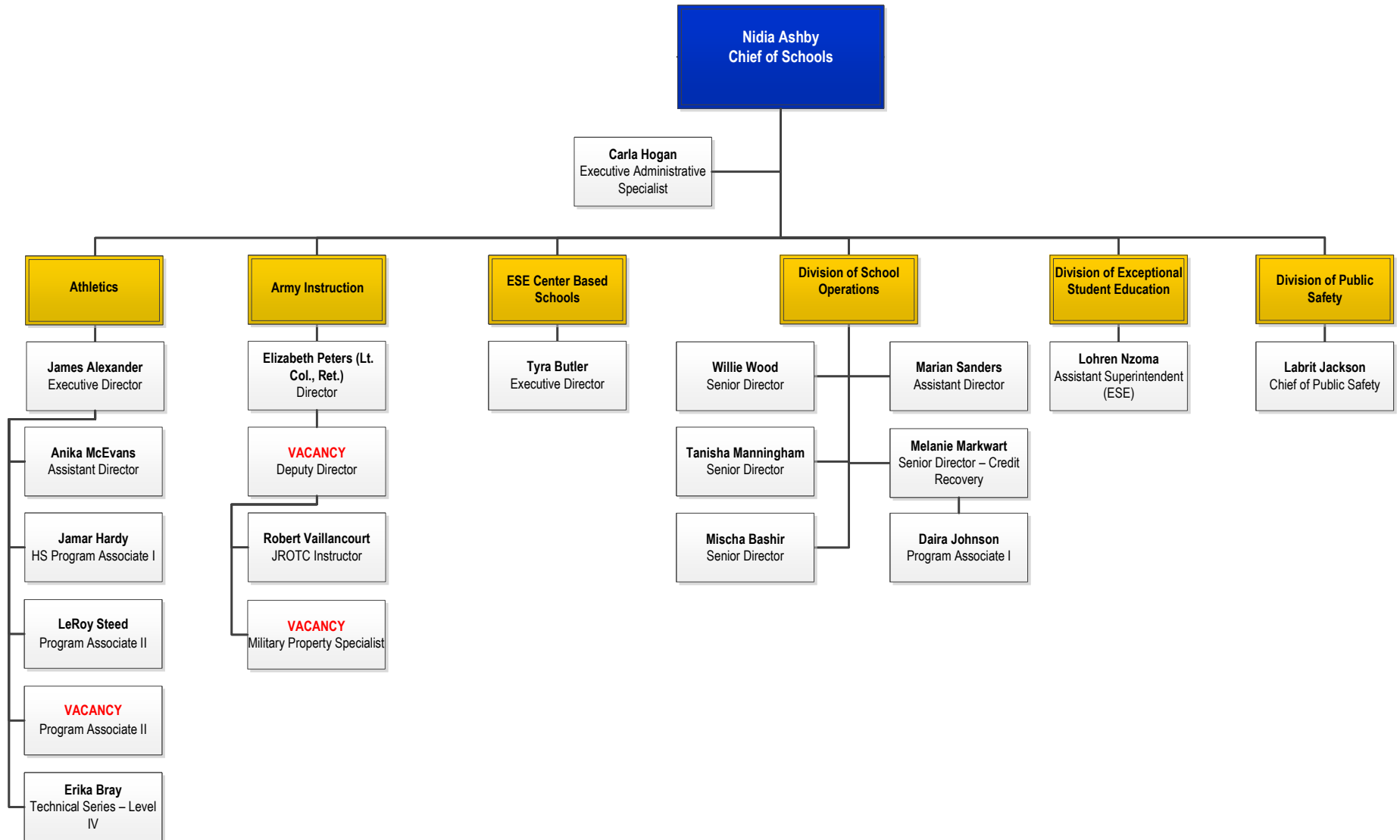


# Office of Partnerships, Innovation and Whole Child Support



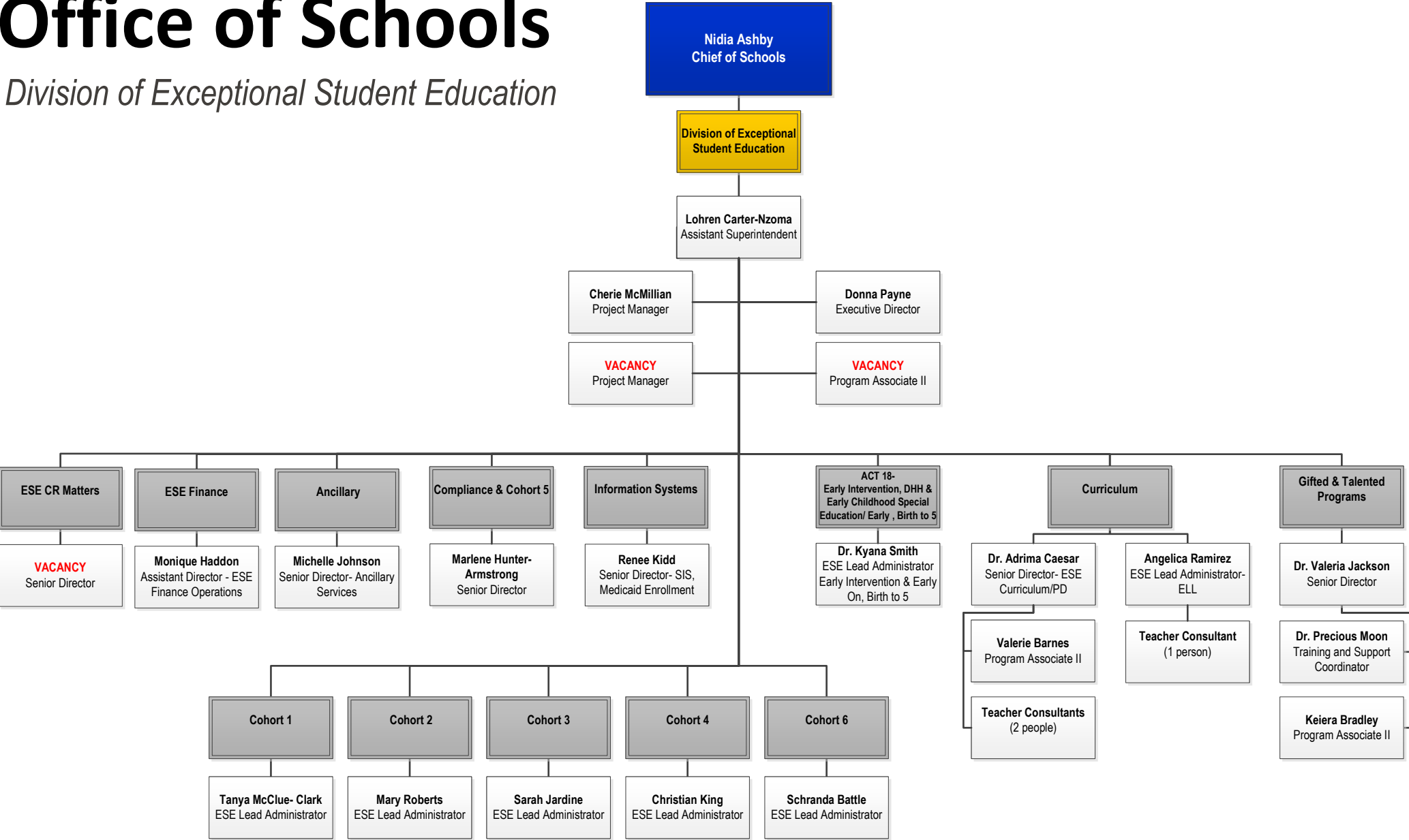


# Office of Schools



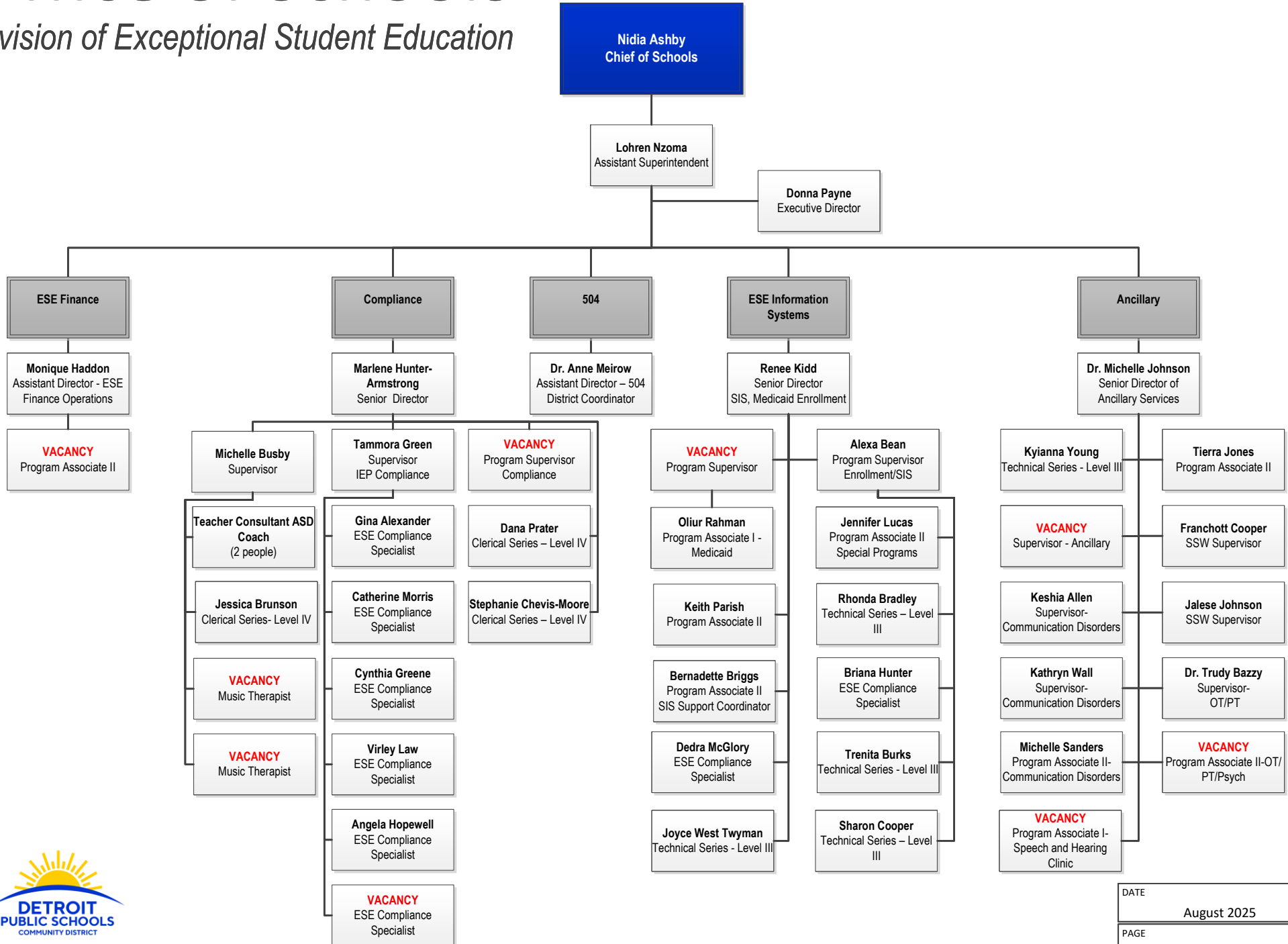
# Office of Schools

Division of Exceptional Student Education



# Office of Schools

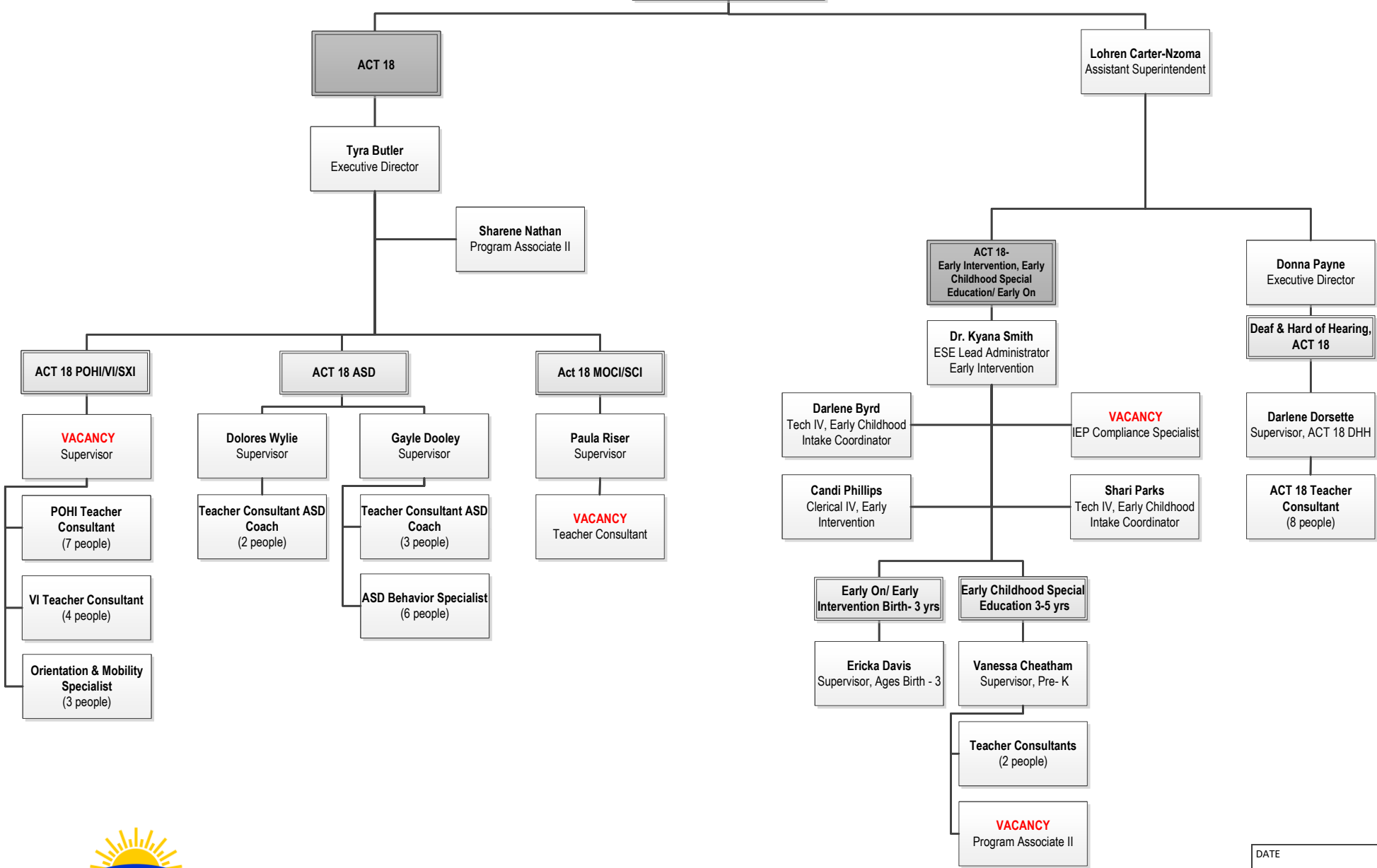
## Division of Exceptional Student Education



# Office of Schools

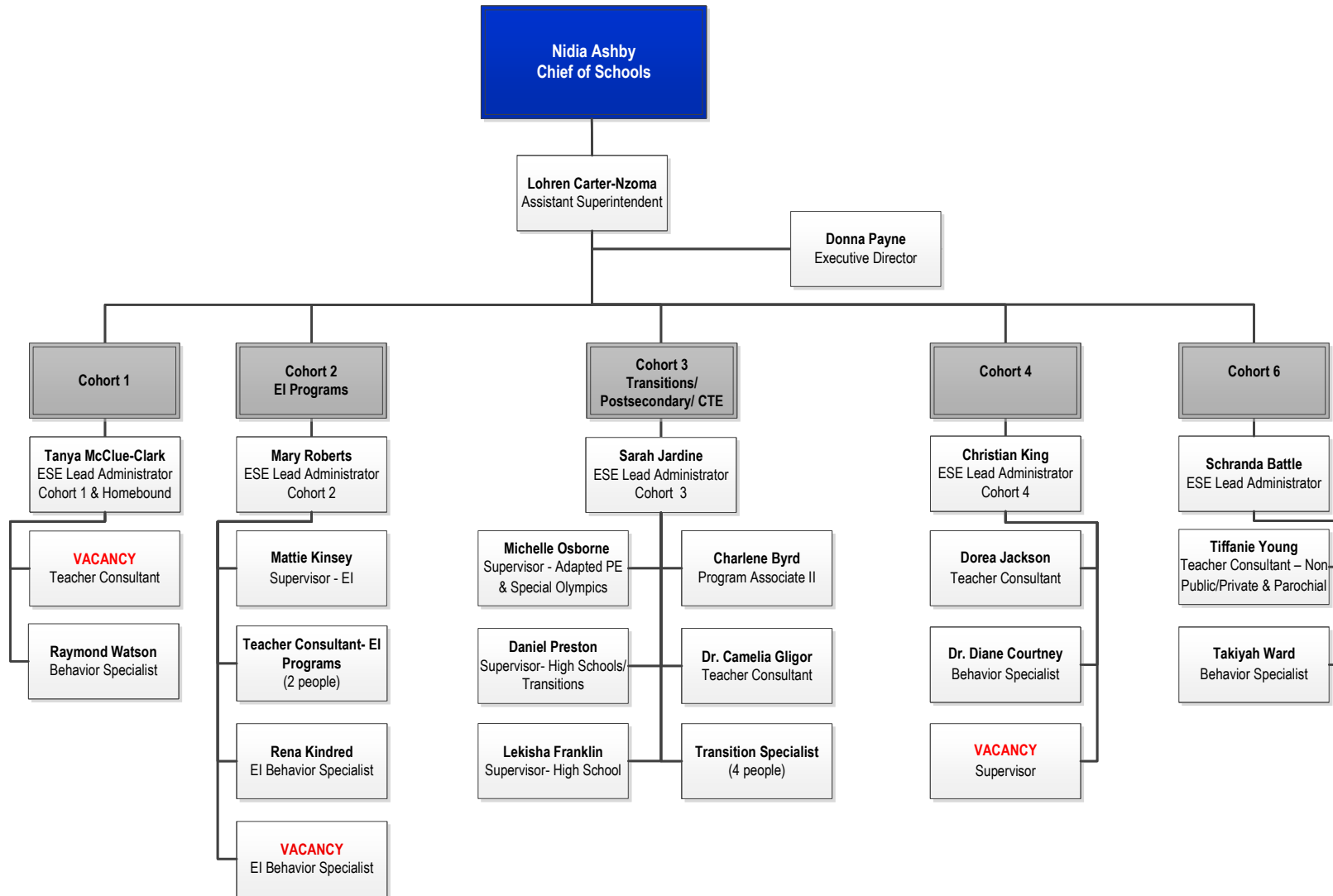
Division of Exceptional Student Education

Nidia Ashby  
Chief of Schools

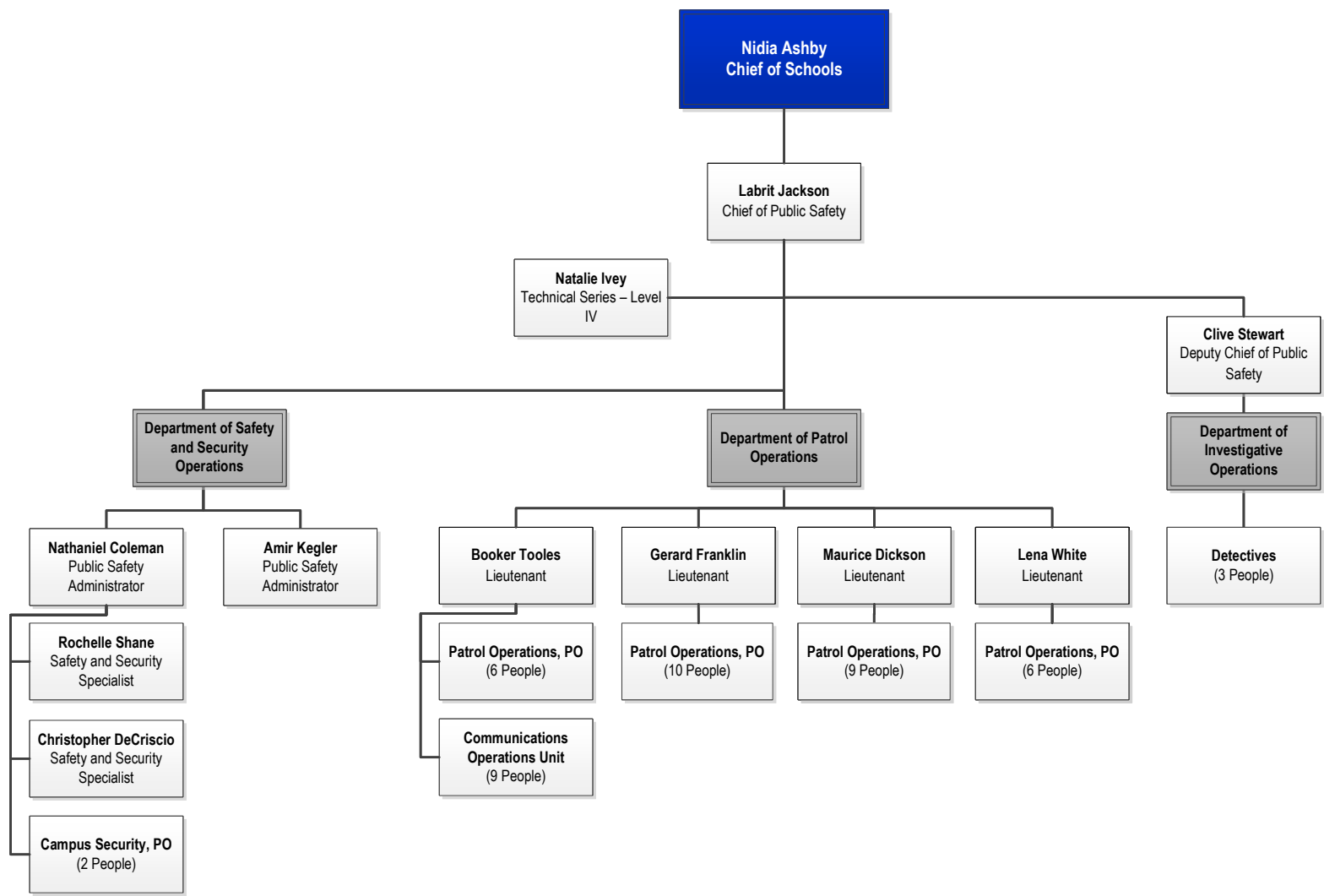


# Office of Schools

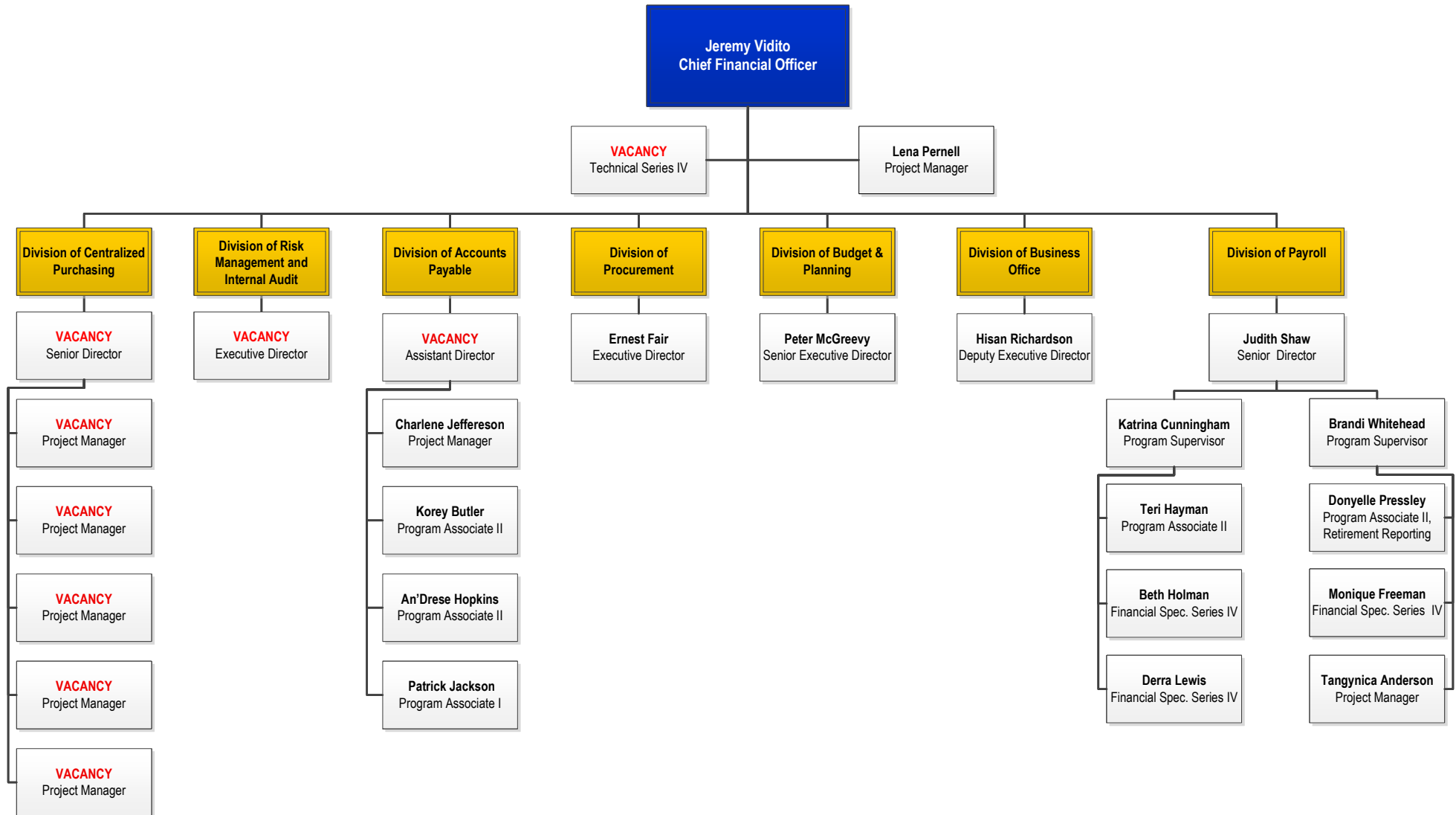
## Division of Exceptional Student Education



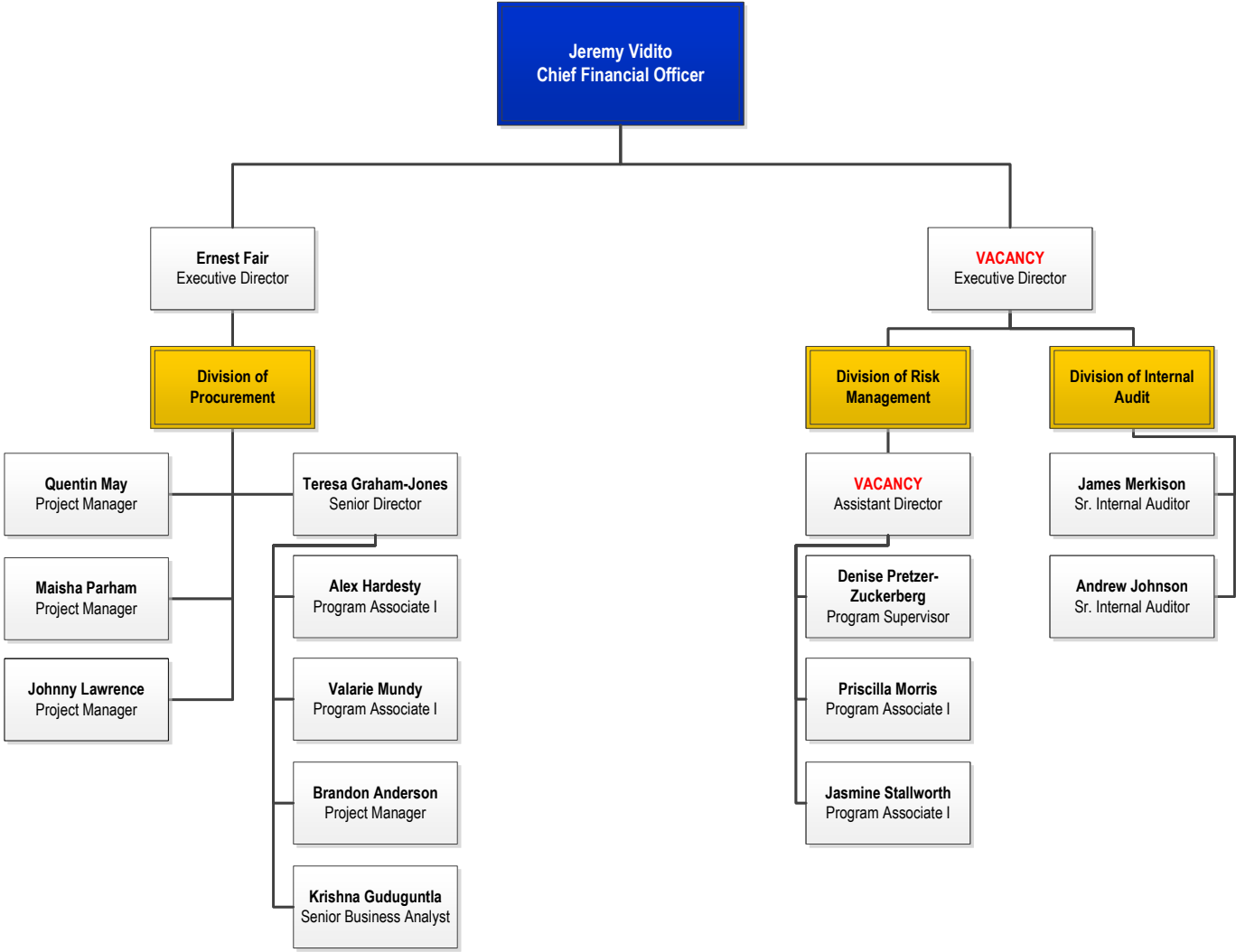
# Office of Public Safety



# Office of Finance

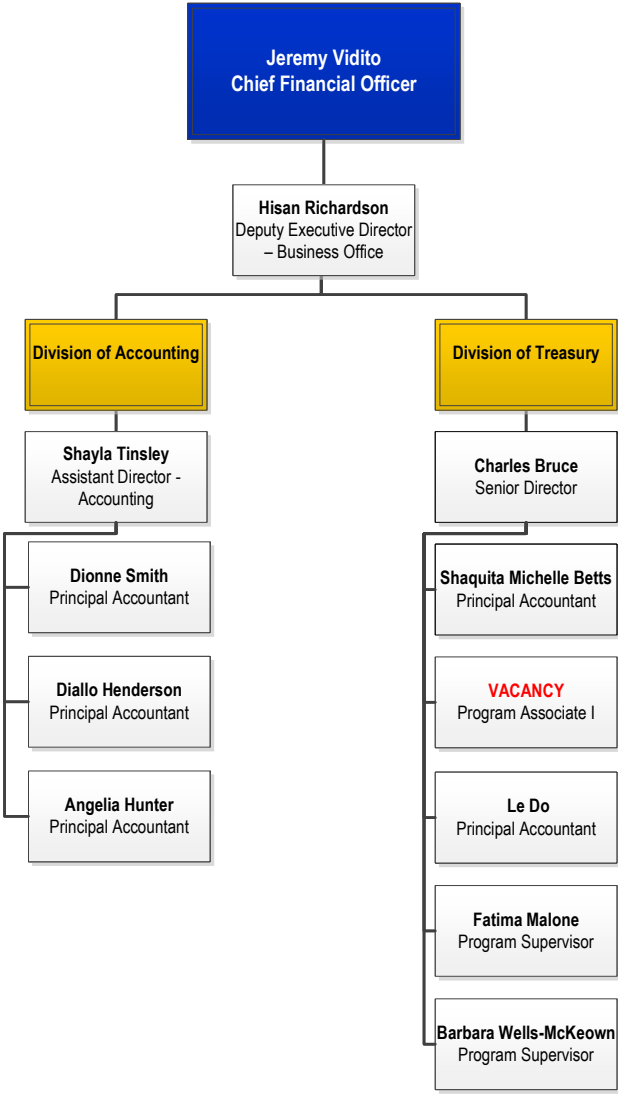


# Office of Finance

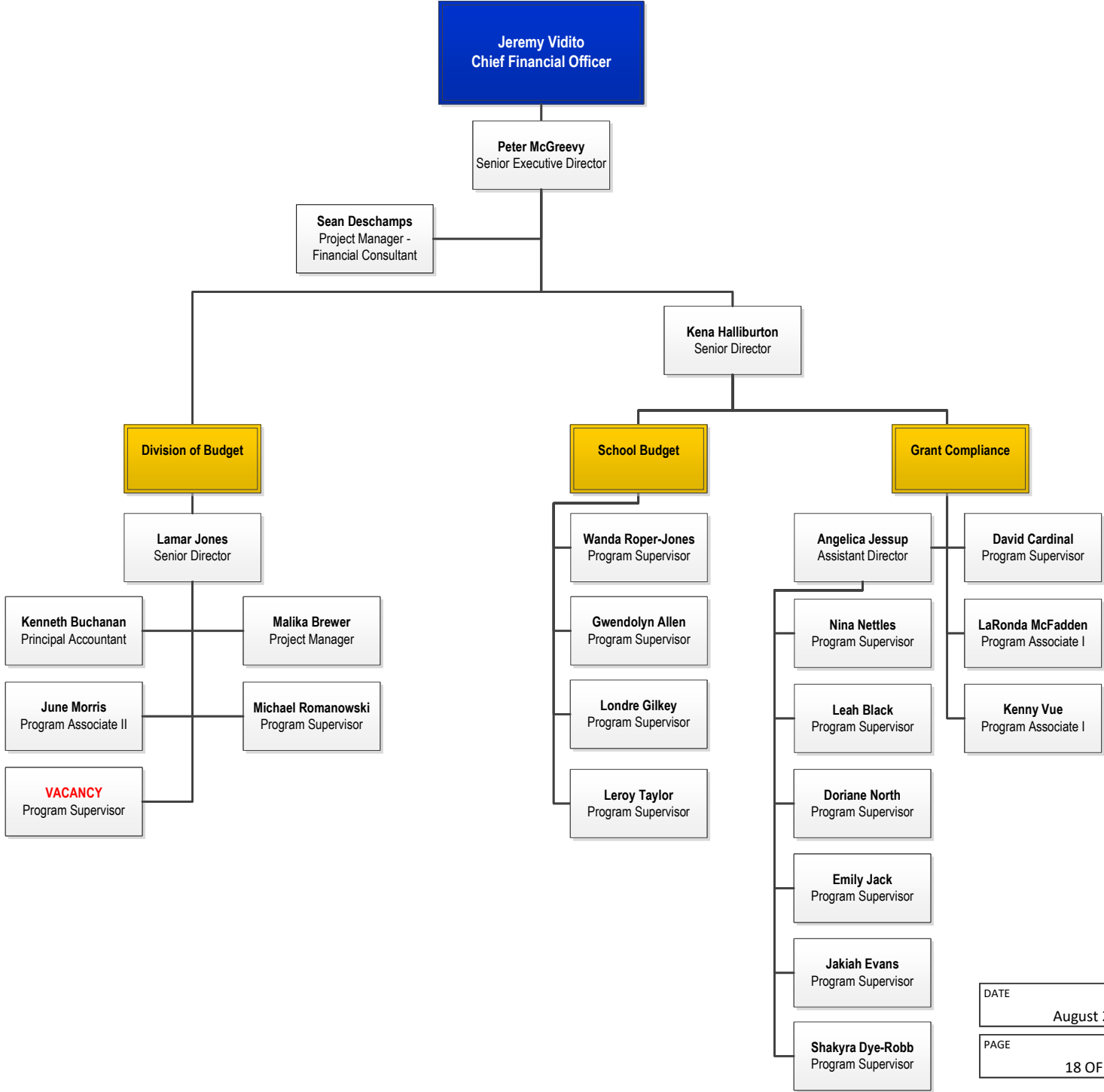




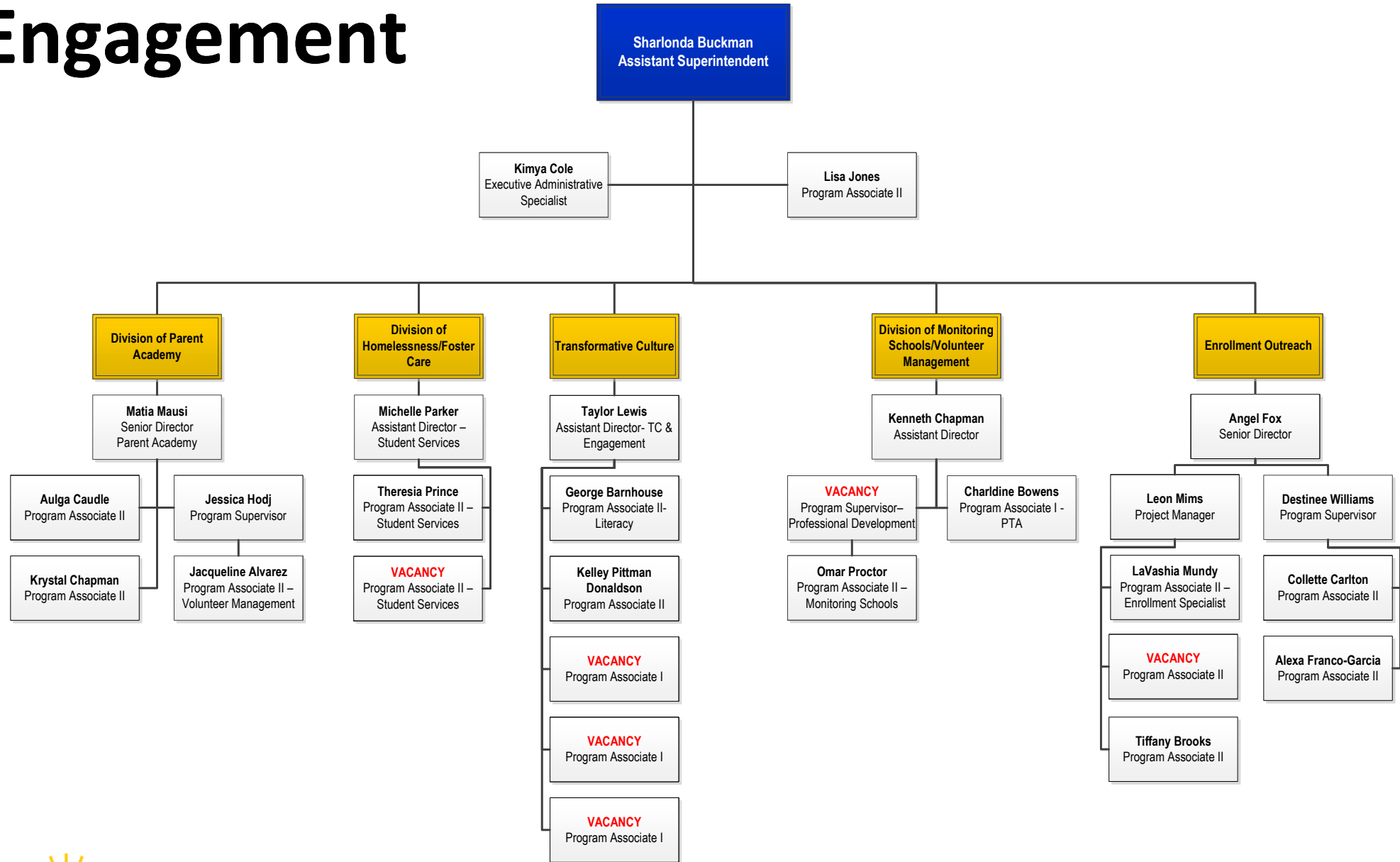
# Office of Finance



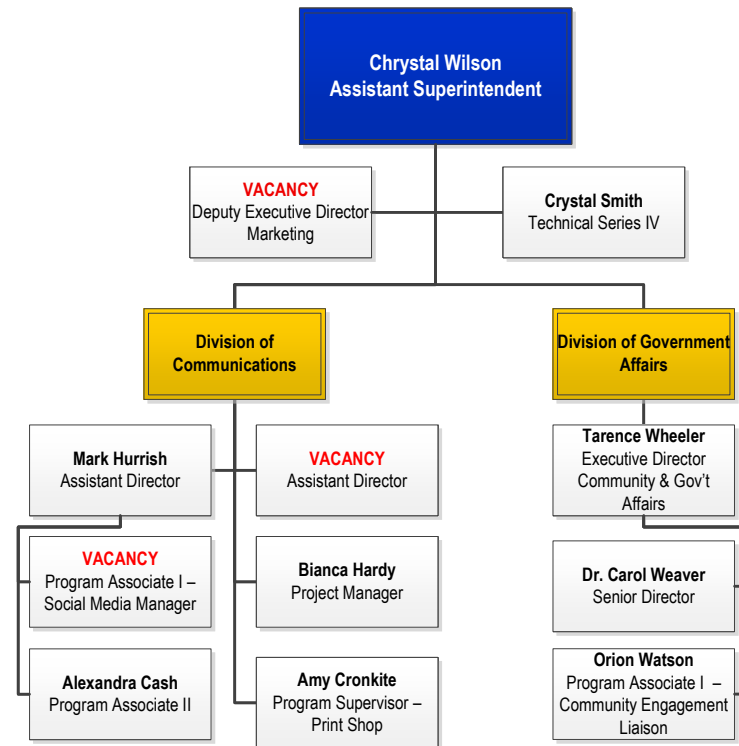
# Office of Finance



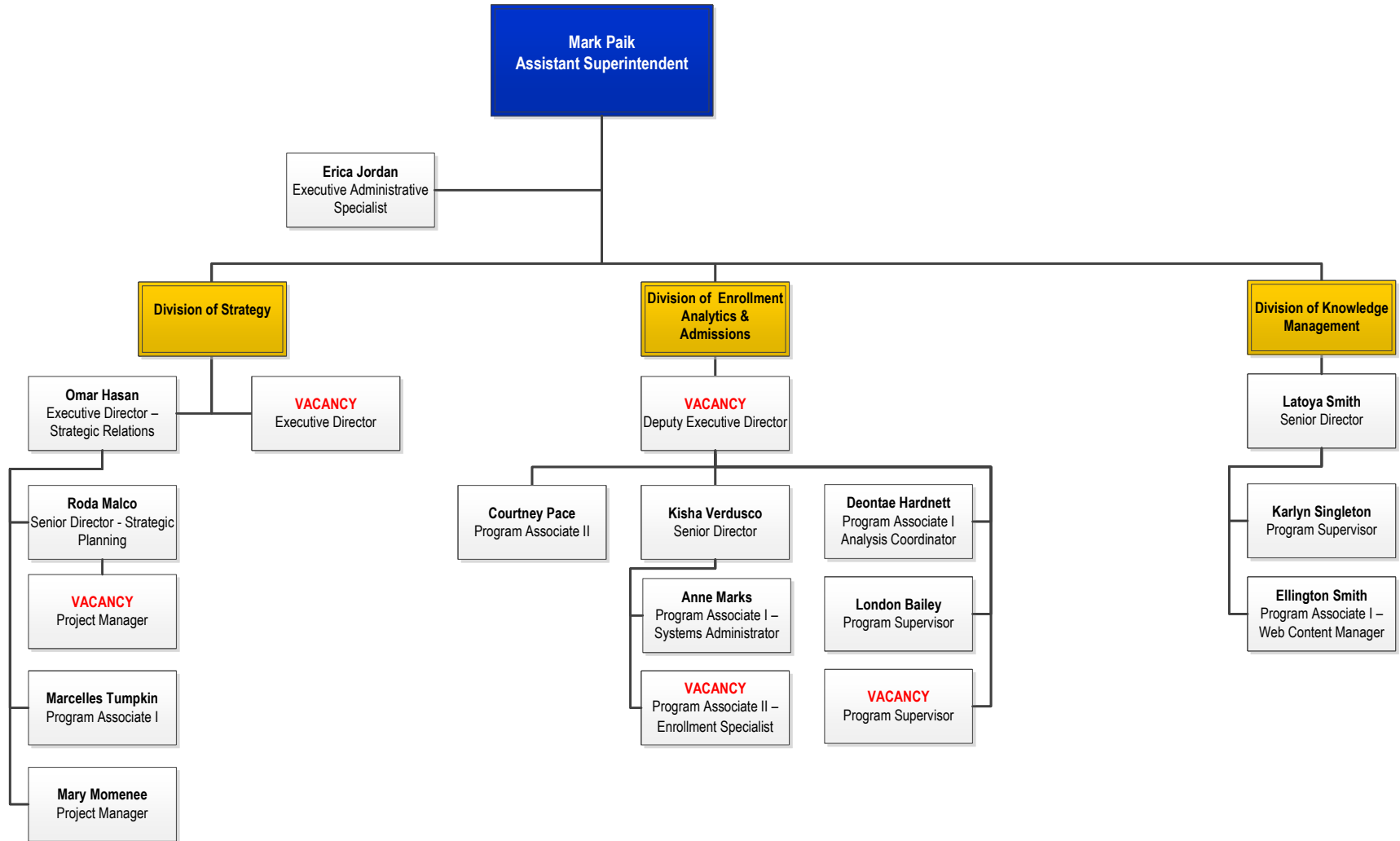
# Family & Community Engagement



# Office of Communications, Marketing & Government Affairs

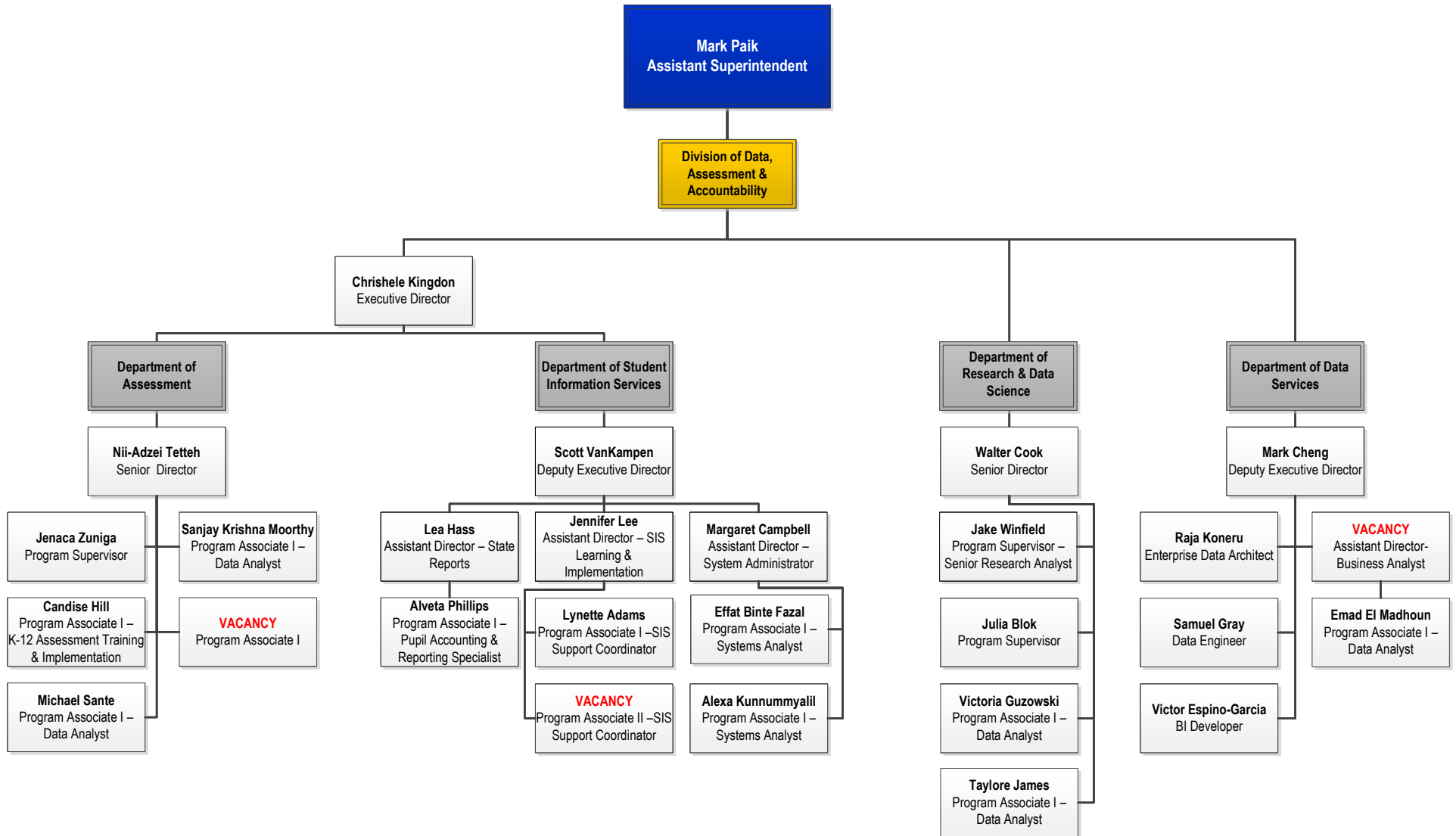


# Office of Strategy, Data, and Accountability

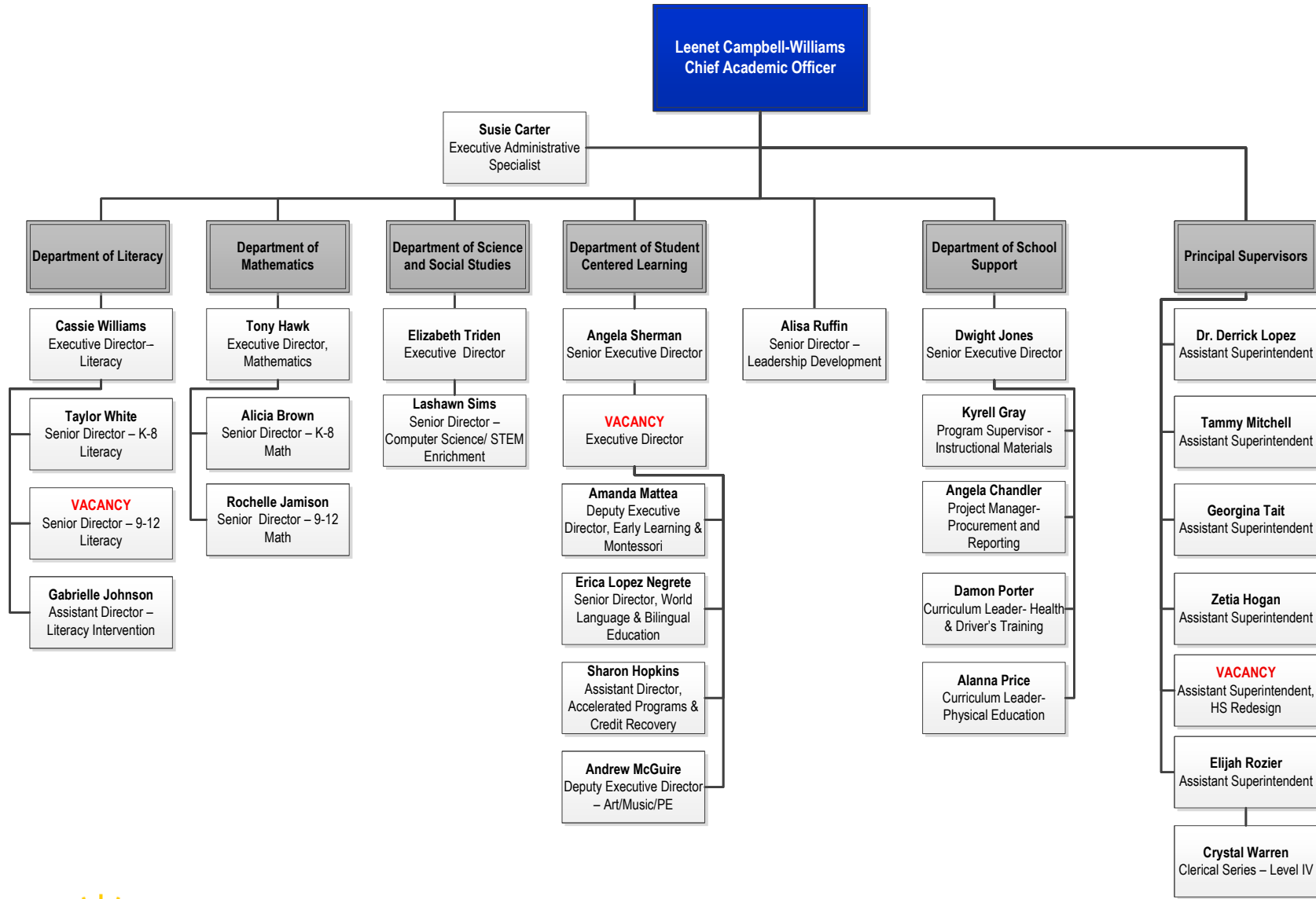


# Office of Strategy, Data, and Accountability

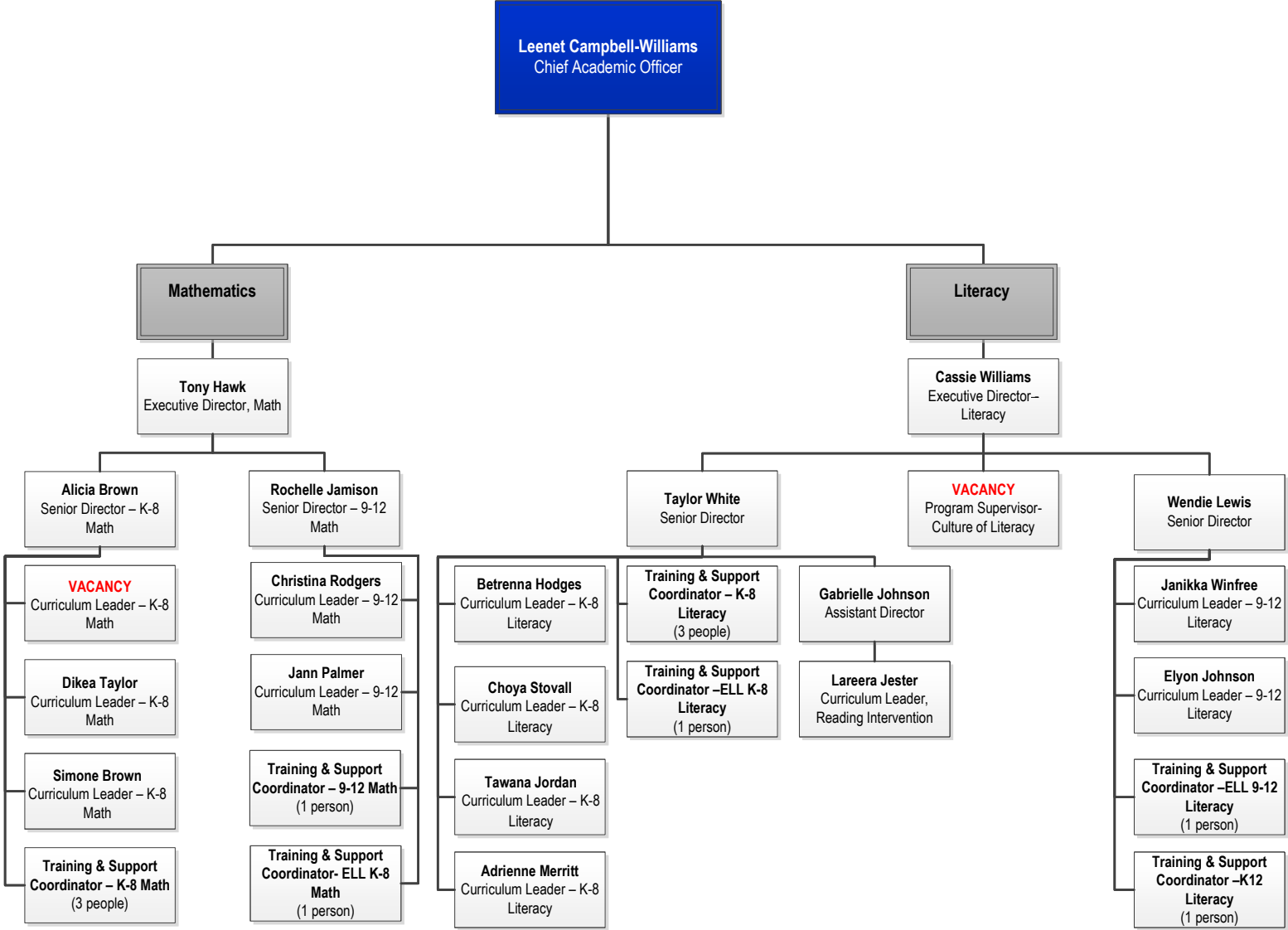
## Division of Data, Assessment & Accountability



# Office of Academics

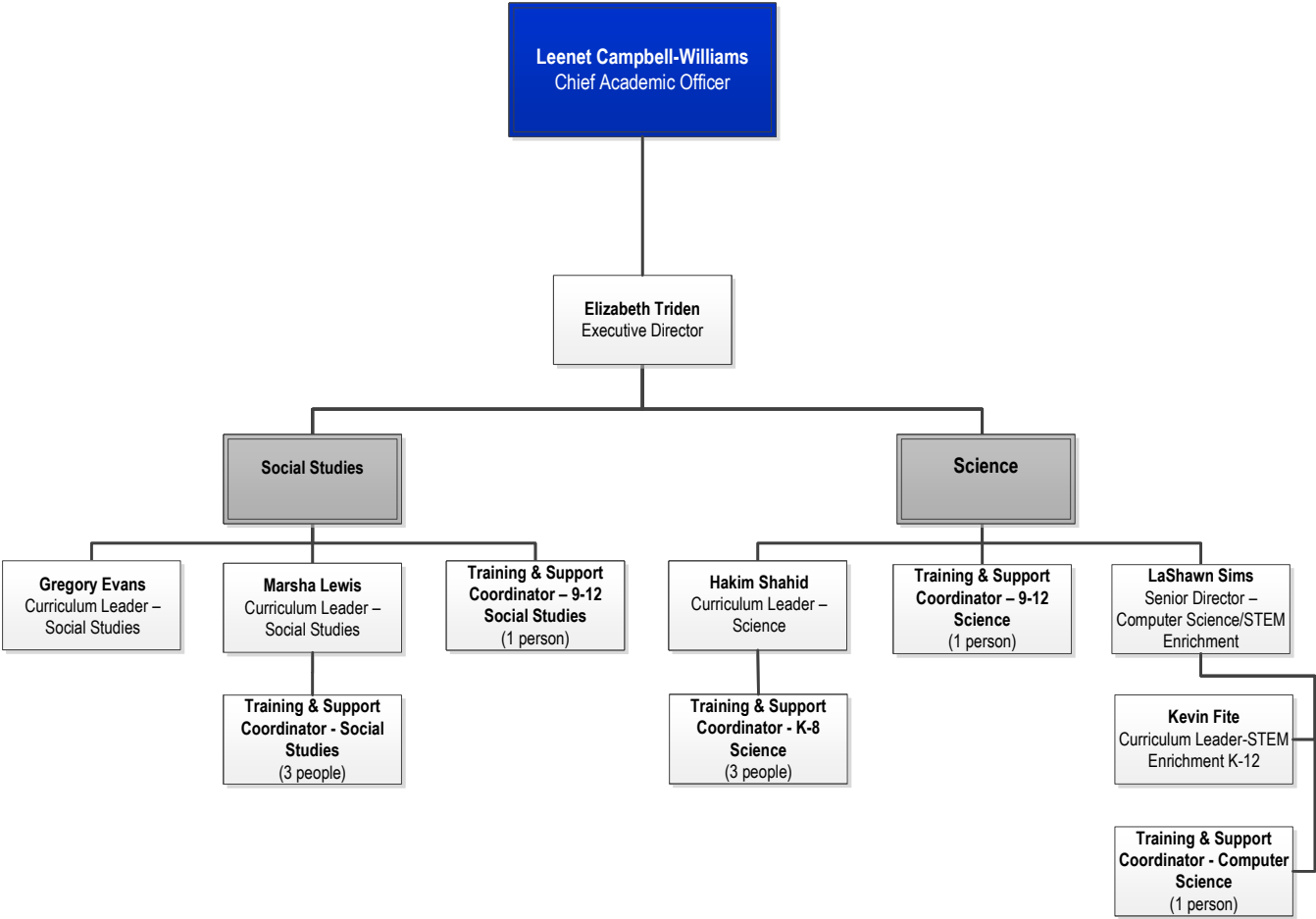


# Office of Academics

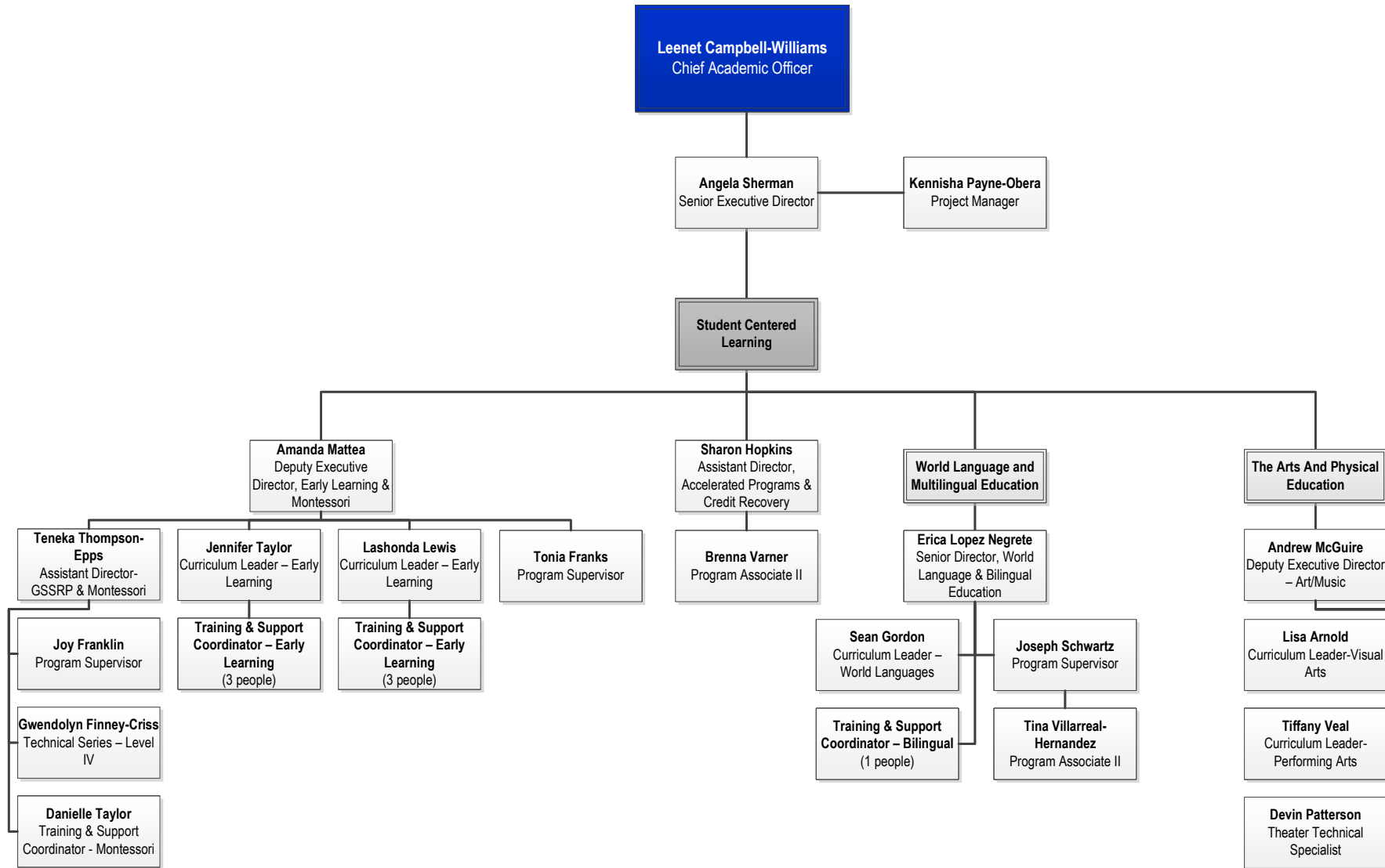




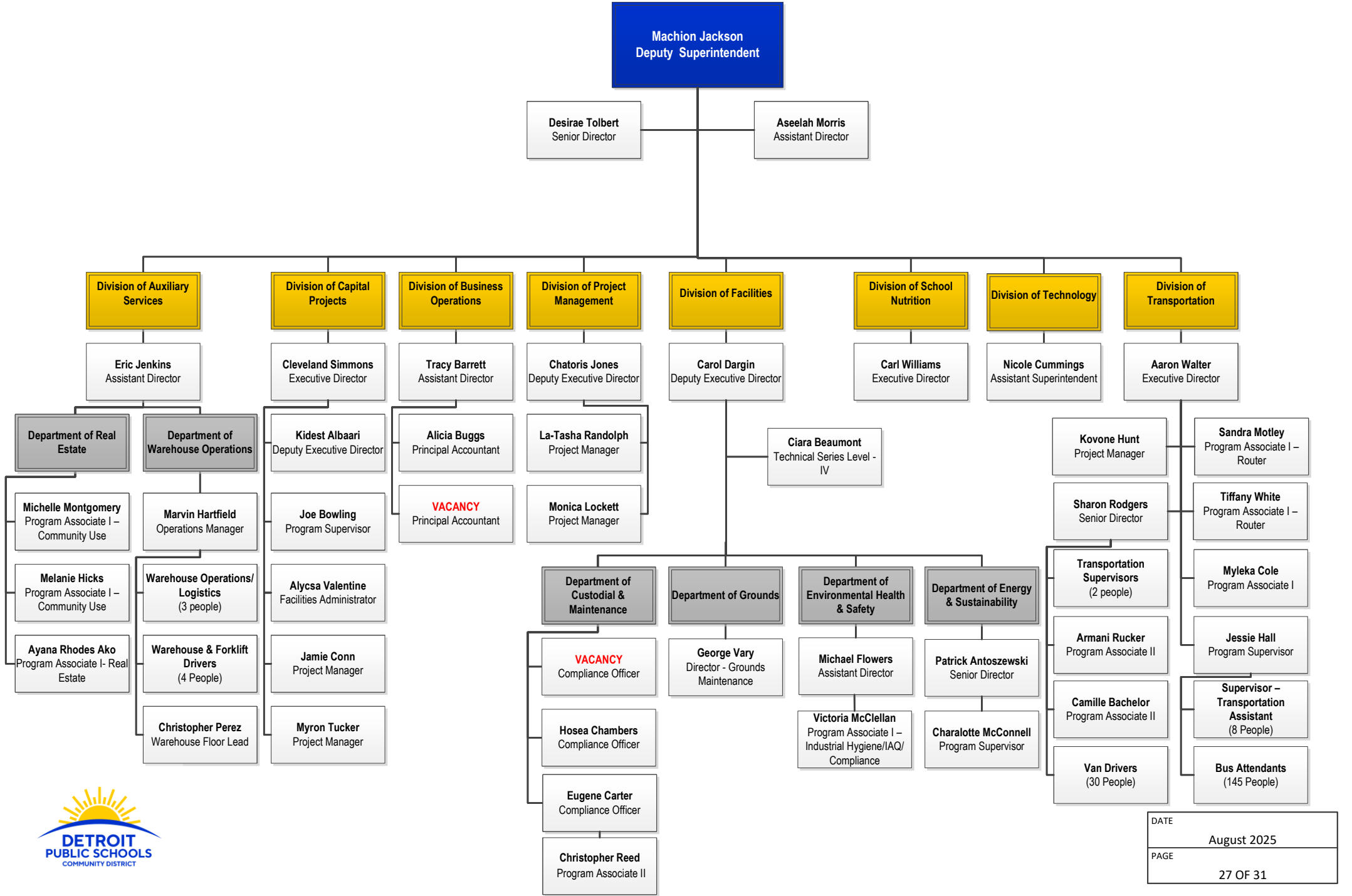
# Office of Academics



# Office of Academics

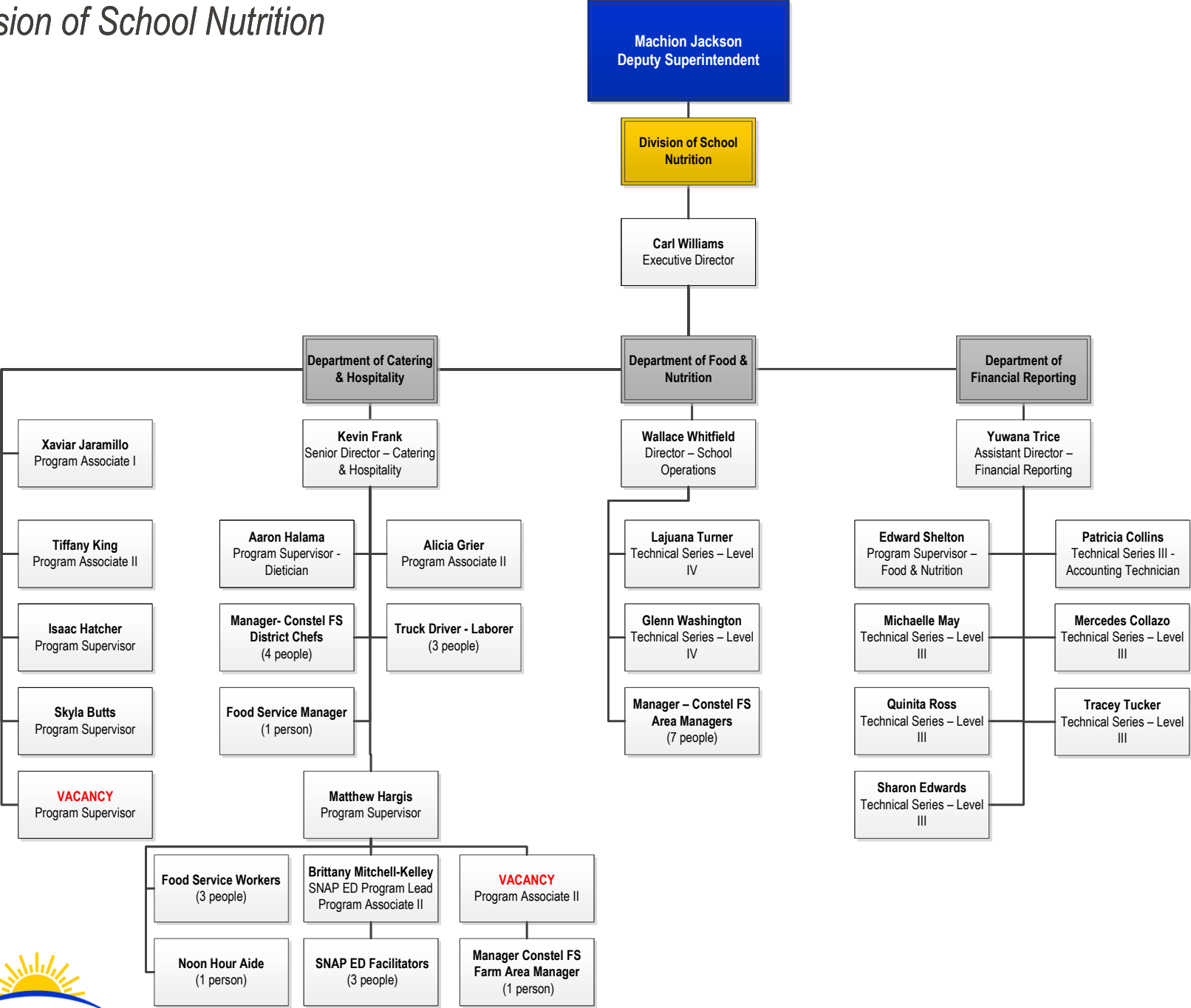


# Office of Operations



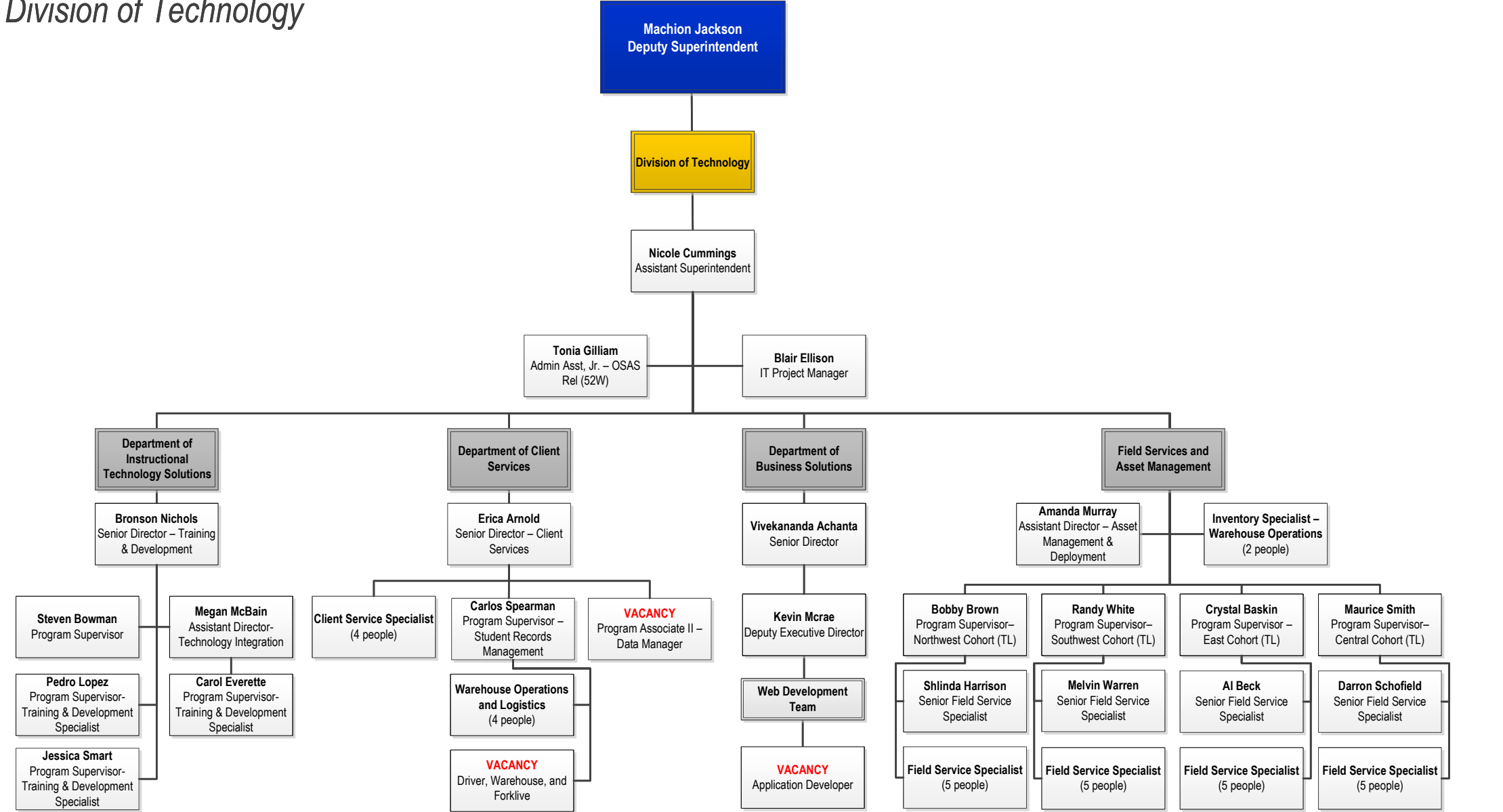
# Office of Operations

Division of School Nutrition



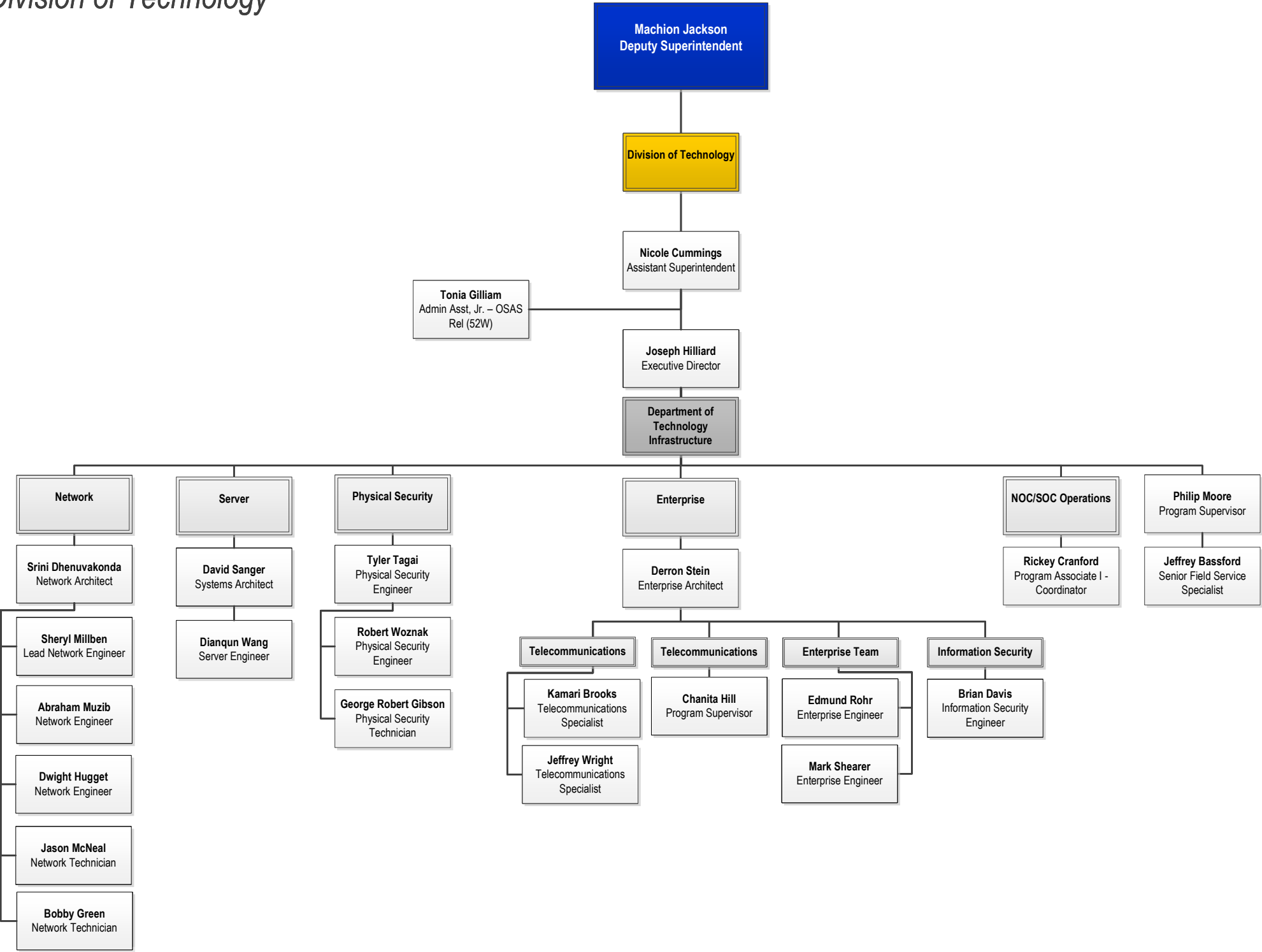
# Office of Operations

Division of Technology



# Office of Operations

Division of Technology



# Office of Human Resources

